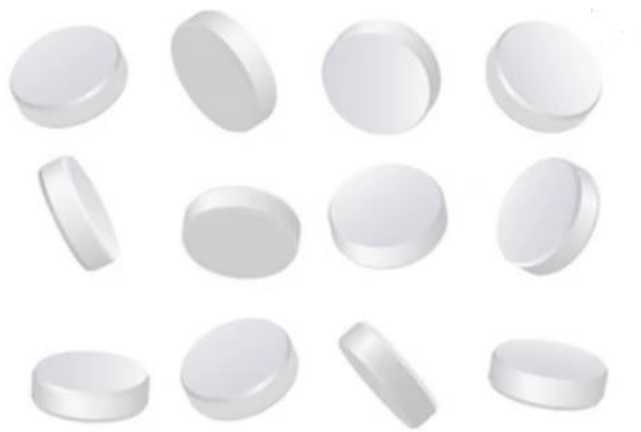


# Determination of Contact Angle of Pharmaceutical Excipients

Pharmaceutical formulations are composed of a biologically active primary drug and excipients with specific functions. Surfactants are the most common functional excipients, which changes the contact angle between the liquid and the tablet by reducing the interfacial tension, thus improving the hygroscopicity of the tablet. **CD Formulation** can test the contact angle of pharmaceutical excipients to help customers better select surfactants, which in turn facilitates drug development and facilitate the commercialization of pharmaceuticals.



## Our Services

### Determination of Critical Micelle Concentration and Surface Tension

The properties of surfactants tend to change before and after the critical micelle concentration, as does their wettability. The drop weight method (Fig.1) was used to prepare a series of concentrated surfactant solutions.

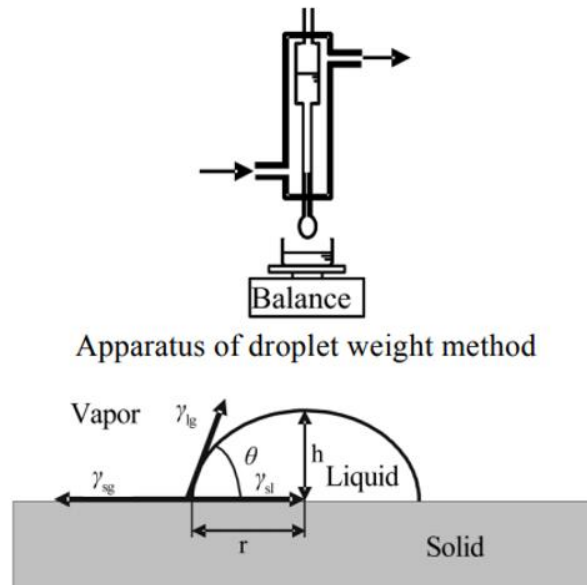


Fig.1 Profile of a drop of liquid on a solid surface. Contact angle, contact radius and three interfacial tensions,  $\gamma$ , between solid and liquid or vapor phases.

### **Determination of the Contact Angle of a Drop of Liquid on the Surface of a Surfactant-excipient Mixture**

### **Determination of Dynamic Contact Angle of Droplets on the Surface of Excipients**

In addition to the above services, **CD Formulation** also provides testing services for surface/interface tension, roughness modification contact angle, interface rheology, and surface free energy to help customers quickly grasp the information related to the contact angle of pharmaceutical excipients. Our services are first-class, helping you to develop the most appropriate product solutions based on relevant information and accelerate the commercialization of drugs.

### **Our Vision**

We strive to be a company providing the highest quality contact angle testing services for pharmaceutical excipients worldwide. To meet customer needs and exceed customer expectations will always be our goal. We will continue to be at the forefront

of innovation, applying the latest science and technology to the pharmaceutical industry through our services to drive the global healthcare business.

## **References**

1. Zhang S. W., Lian Y. Y. Water-repellent and determination of the contact angle [J]. *Mod Measurement Test*, 1994, 3: 36–41.
2. Szymczyk K., *et al.* Wettability, adhesion, adsorption and interface tension in the polymer/surfactant aqueous solution system. I. Critical surface tension of polymer wetting and its surface tension [J]. *Colloids Surf A Physicochem Engineer Asp*, 2012, 402: 132–138.
3. Knöös P., *et al.* Surfactants modify the release from tablets made of hydrophobically modified poly (acrylic acid) [J]. *Results Pharm Sci*, 2013, 3: 7–14.